

“I will strengthen you and help you”

Isaiah 41:10

SYRO-MALABAR
**INTER PARISH
TALENT FEST**
TEXAS OKLAHOMA REGION
AUGUST 1 - 3
2025

ST.MARY'S SYRO-MALABAR CHURCH, PEARLAND, TX



powered by

TRINITY GROUP
INC.

Integrity and Excellence in Business



GENERAL GUIDELINES



MISSION

Discover talents of children and youth of Syro-Malabar Churches within the Texas, Oklahoma and Missouri region and provide a platform to display their talents.

Promote visual and performing arts among our children.

Foster friendship, harmony, and cooperation among Texas, Oklahoma, and Missouri region Syro-Malabar families beyond Parish/Mission boundaries.

SLOGAN

I will strengthen you and help you (Isaiah 41:10)



GENERAL GUIDELINES – TALENT FEST 2025

1. All Syro-Malabar Parishes and Missions in the Texas, Oklahoma, and Missouri Region will have talent competitions at two levels.
2. Competitions conducted at the two levels are as follows.
 - Local Parish/Mission level Talent Scan.
 - Inter Parish Talent Fest 2025 - Inter Parish/Mission level competition.
3. At the local level, each Parish/Mission will conduct Competitions for the following 5 categories.
 - a) Category I - Students KG – 2nd Grade
 - b) Category II - Students 3rd Grade – 5th Grade
 - c) Category III - Students 6th Grade – 8th Grade
 - d) Category IV - Students 9th Grade – 12th Grade (Including 12th Grade)
 - e) Category V - Adults: 12th Grade and above (Not including 12th Grade)
4. Category I competitions for students in KG – 2nd Grade will only be held at the local Parish/Mission level.
5. Local Parish/Mission level talent competitions will be held prior to Inter Parish Talent Fest and the winners from that will get qualified for the Texas, Oklahoma, and Missouri Region Level competitions. Number of qualified participants for each item varies. Please refer the chart below on page 6. (Event vs Category vs No. of Participants)
6. No differentiation will be made between genders within an age group, except for the Boys dance medley.
7. Contestant must be a registered member of the Syro-Malabar Parish/Mission of the Texas, Oklahoma, and Missouri Region.
8. Inter Parish Talent Fest 2025 (Inter Parish/Mission level competition) will be held on **August 1-3, 2025**.
 - a) Will be held only for Categories II, III, IV, and V.
 - b) The Vicar and the Talent Fest Coordinators of participating churches will be responsible for verifying the Grade and Parish/Mission membership of each contestant.
 - c) Online Registration for Talent Fest 2025 should be completed by June 1st, 2025. Phone-in registrations will not be allowed.
 - d) The Vicar and Talent Fest Coordinator of the participating churches will be responsible for completing online registrations on time. Registrations will not be accepted after the deadline.
 - e) If a contestant is unable to participate due to an injury or unforeseen circumstances after registering, they may be replaced with the participants' Parish Vicar's consent. The participant's Vicar must send an official communication to the Event Director or General Coordinator regarding the situation at least by July 15th, 2025. This replacement must occur with a consensus between the participant's Vicar and Event Director. Once the deadline has passed, replacements will no longer be allowed.

GENERAL GUIDELINES – TALENT FEST 2025

- f) Participating Division A Parishes should pay \$500, and Division B parishes/missions pay \$250 as registration fee to meet the expenses of the event.
- g) **Division A** churches are Austin, Coppell, Garland, Houston and Pearland. **Division B** churches/missions are Frisco, Kansas City, McAllen, Oklahoma and San Antonio.
- h) Make cheques payable to St. Mary's Syro-Malabar Catholic Church, Pearland. In the Memo mention "Church registration IPTF-2025".
- i) In addition to the above fee, there will be a registration fee of \$25 for each participant to take part in IPTF to cover the expenses of these event. This fee will be collected prior to the dates of the event by individual parish coordinators from every participant from their respective parish and sent as one payment to the hosting parish.
- j) Parishes/Missions that have not paid their registration dues will not be allowed to participate in the competition.
- k) **All contestants should abide by the guidelines.**
- l) **All contestants must adhere to the decisions of the judges.**
- m) **All contestants should also abide by the grievance/ disciplinary policy mentioned in page 29 and 30.**
- n) Contestants must be present when their names are called out before the item. If a contestant does not show up on the stage by the 3rd call, he/she will be disqualified.
- o) All contestants must dress and conduct themselves appropriately, in conformity with accepted standards of dress code and behavior in a Catholic Church.
- p) Music tracks for the events where applicable should be electronically submitted as per the instructions of the IPTF track coordinator before the deadlines.
- q) A minimum of 2 contestants must be registered for any event to be considered for competition. Should any item fail to meet the required minimum number of registrants, the same will be cancelled and the registrant will be notified of the cancellation at least one week prior to the competition.
- r) A panel of at least 3 judges would individually rate a contestant. The winner would then be determined by taking the total of the individual scores awarded by all the judges.
- s) If a participant experiences a costume malfunction, falls, misses a prop, or if their microphone falls during their performance, they must continue without stopping. Participants are not allowed to redo their performance due to such incidents. It is at the judges' discretion to evaluate the impact of the malfunction and assign marks accordingly. Participants and their supporters should understand that no complaints regarding the judges' discretion will be entertained, even if a participant with a mistake receives a prize. The only exception to this rule is if a technical issue caused by the host (e.g., power failure or equipment malfunction) occurs, in which case the performance may be redone.

GENERAL GUIDELINES – TALENT FEST 2025

- t) Additionally, if a participant faints or is unable to continue their performance due to health reasons, they will not be permitted to redo their performance. While the health and safety of all participants are of utmost importance, redoing a performance under these circumstances is not allowed.
 - u) Prizes will be awarded to the First, Second, and Third place winners. Electronic certificates for all winners will be sent to their respective coordinators once the event concludes.
 - v) First, second and third prize winners of individual items will be given points as follow:
 - 1. First prize 5 points
 - 2. Second prize 3 points
 - 3. Third prize 1 points
 - w) Teams winning first, second and third prize in group items will be given points as follow:
 - 1. First prize 10 points
 - 2. Second prize 6 points
 - 3. Third prize 2 points
 - x) An overall championship trophy will be awarded to the Parish/Mission accumulating the highest points from all Talent Fest events. If two or more Parish/Mission scores the same highest points, the one which holds more first places will win; and if they hold the same number of first places, the one holding more second places will win. If they hold the same number of first, second and third places, then they will share the overall championship. Also, there will be trophies for Parishes finishes second and third place in the final point table from Division A.
 - y) A special trophy will be awarded to the first-place parish/mission among Division B parishes/missions.
 - z) For IPTF 2025 as well as going forward, Talent Star Titles will not be announced, nor any trophies will be awarded.
9. **Solo Events** – A parish can only have specified number of contestants as specified in the Event vs Category vs No. of Participants Matrix (Page 6) for each Solo Event. No exceptions will be made if a tie arises at Parish level competitions. The Tie must be resolved by the individual Parish and only specified number of winners should participate in Inter-Parish competition.
10. **Max Number of Solo Events for a Contestant** – A contestant can only participate in a **maximum of 4 solo events**. In addition to this, they can participate in as many group events and in Bible Quiz.

GENERAL GUIDELINES – TALENT FEST 2025

11. Watercolor Painting, Pencil Drawing, Essay writing and Poetry Writing will be conducted at the same time at all parishes. Parish/Mission will evaluate the entries and 2 selected entries per category will be sent for IPTF level judging. Details of the logistics are present in page 28.
12. All Materials submitted to the host parish will be owned by host parish and will not be returned.
13. **Individual parishes will be responsible for meeting all the Safe Environment guidelines and requirements of the St. Thomas Syro Malabar Catholic Diocese of Chicago for all their participants and coordinators to compete in IPTF 2025. In addition, all participants should sign the Indemnity form as part of registration process. For Safe Environment requirements, please contact your parish Safe Environment Site Admins.**
14. **A final meeting should be held at the parish level for individuals attending the event. This meeting will be conducted by the Vicar, Mission Director, or Parish Coordinator, and it is mandatory for all participants to attend. This meeting will include a briefing on all event guidelines, time limits, policies, and grievance or disciplinary procedures.**
15. **The consumption, possession, or distribution of alcoholic beverages is strictly prohibited on the event premises. This includes all indoor and outdoor areas associated with the event. Any participant found in violation of this policy will be subject to immediate removal from the event and may face further disciplinary action.**
16. **The host parish will not be held responsible for any legal matters, including police cases, that may arise during the event on the premises. This includes, but is not limited to, incidents involving violations of local laws or regulations, disturbances, or criminal activities. Participants are solely responsible for their actions and any legal consequences resulting from their conduct during the event.**
17. This guideline will remain unchanged for all the subsequent IPTFs. Any change to this will need to be approved by majority of the parishes/missions. In case if there is a tie, the hosting parish gets to take the final call.

Details of items for categories II, III, IV and V for Talent Fest 2025 are listed on the following pages.

GENERAL GUIDELINES – TALENT FEST 2025

IPTF 2025 CATEGORIES AND EVENTS

Category II Students 3rd Grade – 5th Grade

Category III Students 6th Grade – 8th Grade

Category IV Students 9th Grade – 12th Grade (Including 12th Grade)

Category V Adults – 12th Grade and above (Not including 12th Grade)

- Category II-IV participants are determined from their **CCD grade (not school grade)**: A student will be in a category based on the CCD grade that the student is currently in (if IPTF occurs during the academic CCD year) or the grade that the student just completed (if IPTF occurs after the academic CCD year ends).

Event vs Category vs No. of Participants					
Events	Cat II	Cat III	Cat IV	Cat V	Page #
Pencil Sketching	2	2	2		7
Watercolor Painting	2	2	2		8
Essay Writing	2	2	2		9
Poetry	2	2	2		10
Speech	2	2	2		11
Bible quiz, Individual	5	5	5	5	12
Bible quiz, Group	X (Cat II to V combined)				12
Bible Reading Malayalam				1 (Age 35 above)	13
Bible Reading English				1 (Age 25-35)	13
Solo Dance Folk	2	2	2		14
Solo Dance -Semi classical	2	2	2		15
Group Dance	X	X (Cat III & IV combined)			16
Boys Dance Medley		X (Cat III & IV combined)			17
Mono Act	2	2	2		18
Bible skit	X (Cat II to V combined (Age 22 under))				19
Solo Song (English)	2	2	2		20
Solo Song (Malayalam)	2	2	2		21
Group Song	X (Cat II to IV) combined				22
Instrumental music	X (Cat II to IV combined)				23
Margam Kali				X	24
Bible Tableau				X (Age 18-25)	25

- “X” for Group Events indicates items available for participation in specific category. Refer individual guideline pages for number of participants allowed.
- Digits for Solo events indicate the number of participants from each parish/mission allowed.

GENERAL GUIDELINES – TALENT FEST 2025

PENCIL SKETCHING

- ❖ Contestants should bring lead pencil, sharpener, eraser and necessary tools.
- ❖ Sketching/Drawing Paper (Size: 11" x 14", thickness 80 lbs.) should be used for the competition.
- ❖ Contestants should submit their work on the paper provided by the Parish/Mission official.
- ❖ Coloring is not allowed. Sample drawing will not be displayed at the competition.
- ❖ Topic will be provided to the parish coordinators half an hour before the start of the competition.
- ❖ Winning entries from each Parish (2 per category) will be sent to IPTF 2025 judging Panel in a sealed envelope
- ❖ The winner at IPTF 2025 level will be selected by the panel of judges and the result will be published a week before IPTF 2025 event
- ❖ A maximum of 90 minutes will be provided.
- ❖ Electronic devices, including cell phones, will not be allowed. Smartwatches will be allowed.



Judging Criteria	Description	Total Points
Theme	How well the artwork portrays the given theme.	20
Composition	Layout of the visual elements in the picture. (10) Choice of elements used to bring out the theme, e.g. figures, symbols, objects...etc. (10)	20
Light and Shade	How skillfully the media technique brings out details of the work by outlining, highlighting, shading ...etc.	20
Aesthetic Value	Overall neatness, beauty and appeal beyond the technical proficiency.	20
Creativity	Evaluating artist's originality and imagination.	20

GENERAL GUIDELINES – TALENT FEST 2025

WATERCOLOR PAINTING

- ❖ Contestants should bring necessary colors, brushes and tools for painting.
- ❖ Watercolor paper (Size: 11" x 15", thickness 140 lbs.) should be used for the competition.
- ❖ Contestants should submit their painting on the paper provided by the Parish/Mission official.
- ❖ Draft paper will be provided if needed.
- ❖ Topic will be provided to the parish coordinators half an hour before the start of the competition.
- ❖ Winning entries from each Parish (2 per category) will be sent to IPTF 2025 judging Panel in a sealed envelope
- ❖ The winner at IPTF 2025 level will be selected by the panel of judges and the result will be published a week before IPTF 2025 event
- ❖ A maximum of 90 minutes will be provided.
- ❖ Electronic devices, including cell phones, will not be allowed. Smartwatches will be allowed.



Judging Criteria	Description	Total Points
Theme	How well the artwork portrays the given theme.	20
Composition	Layout of the visual elements in the picture. (10) Choice of elements used to bring out the theme, e.g. figures, symbols, objects...etc. (10)	20
Skill and Technique	Level of skill displayed through control of tools and variety of techniques used.	15
Aesthetic Value	Overall neatness, beauty and appeal beyond the technical proficiency.	15
Creativity	Evaluating artist's originality and imagination.	15
Color Balance	Artistic application of colors and tones	15

GENERAL GUIDELINES – TALENT FEST 2025

ESSAY WRITING

- ❖ Essay writing contestants should submit their work on paper supplied by the organizers.
- ❖ It should be written using blue / black ink/ #2 pencil.
- ❖ Contestants will be provided scratch paper for drafting.
- ❖ Topic will be provided to parish coordinators half an hour before the start of the competition.
- ❖ Winning entries from each Parish (2 per category) will be sent to IPTF 2025 judging Panel in a sealed envelope
- ❖ The winner at IPTF 2025 level will be selected by the panel of judges and the result will be published a week before IPTF 2025 event
- ❖ A hard copy of the Bible is the only reference book allowed in the competition hall. Electronic devices, including cell phones, will not be allowed. Smartwatches will be allowed.
- ❖ A maximum of 90 minutes will be provided.



Judging Criteria	Description	Total Points
Ideas and Content	Interesting, well – stated main idea or topic sentence; uses logical plan with an effective beginning, middle, and end; good flow of ideas from topic sentence and detail in sequence.	25
Mechanics/Spelling	Correct spelling, grammar, and punctuation; complete sentences; correct use of capitalization	25
Supporting Details and extra Detail Sentences	The main idea is supported by four or more sentences that give details about it. Each supporting detail sentence has more than three sentences that expand on that detail.	25
Easy to Read	The penmanship is neat and readable, and has no visible erasures, smudges or cross outs.	25

GENERAL GUIDELINES – TALENT FEST 2025

POETRY WRITING

- ❖ Poetry writing contestants should submit their work on paper supplied by the organizers. Contestants will be provided scratch paper for drafting. It should be written using blue / black ink/ #2 pencil.
- ❖ Topic will be provided to parish coordinators half an hour before the start of the competition
- ❖ Winning entries from each Parish (2 per category) will be sent to IPTF 2025 judging Panel in a sealed envelope
- ❖ The winners will be selected by the Panel of judges and the result will be published a week before the IPTF 2025 event
- ❖ A hard copy of the Bible is the only reference book allowed in the competition hall. Electronic devices, including cell phones, will not be allowed. Smartwatches will be allowed.
- ❖ A maximum of 60 minutes will be provided.



Category II and III

Judging Criteria	Description	Total Points
Ability to captivate the reader	Captivate and involves reader deeply.	25
Sensory Images	Vivid, detailed images and intensely felt emotion.	25
Use of Language	Use rich and imaginative language.	25
Punctuation	Punctuation enhances conveyance of thoughts and images.	25

Category IV

Judging Criteria	Description	Total Points
Form	Creatively uses an appropriate poetic form	20
Word Usage	Use of vocabulary is precise, vivid and paints a strong clear and complete picture. in the reader's mind.	20
Elements	Effectively uses poetic techniques to reinforce the theme.	20
Language Conventions	Has appropriate spelling, grammar, and punctuation; contains few, if any, errors that do not interfere with the reader's understanding.	20
Illustration	Effective and creative use of illustration enhances the poem's meaning.	20

GENERAL GUIDELINES – TALENT FEST 2025

SPEECH

- ❖ Topic will be same in all Parishes/missions for the local Parish/Mission level and Inter Parish Talent Fest 2025.
- ❖ Contestants should memorize the speech. No supporting memory aids will be permitted.
- ❖ A maximum of 5 minutes will be provided.
- ❖ 2 Participants per Category from Each Parish/mission to compete at Inter Parish Level.
- ❖ Time limit policy applies. Please refer time limit policy on page 27.



Category	Topic for Speech
Category II	Saying 'Yes' to God's call in our daily life.
Category III	The Bread of Life: Finding Sustenance and fulfillment in Christ.
Category IV	The ineffable Gift: Understanding the Mystery and Power of the Holy Eucharist

Judging Criteria	Description	Total Points
Content	Speech development, structure, organization, support material	20
	Effectiveness, achievement of purpose, interest, reception	10
	Speech value, ideas, logic, original thought	10
Delivery	Physical appearance, body language	10
	Voice Flexibility, volume	10
	Manner directness, assurance, enthusiasm	10
	Time Management, time utilization	10
Language	Appropriateness to speech purpose and audience	10
	Correctness, grammar, pronunciation, vocabulary	10

GENERAL GUIDELINES – TALENT FEST 2025

BIBLE QUIZ (Individual & Group)

Bible Quiz competition will be conducted as two separate events.

Individual

- Competition for Categories II and III, IV and V will be Written round.
- 5 contestants per Category per Parish/Mission.
- The time for Category II will be 60 Minutes and 90 minutes for category III, IV & V.
- Category V – Adults can choose between English or Malayalam Question paper.
- If there is a tie, there will be a tie breaker round.
- This event will determine the bible quiz champions for each section.

Group

- Team will have maximum of 4 contestants.
- One participant from each category will form the Parish team for the team event (group of 4).
- **The team event will be a Stage event.**

Family members of the Quiz Master are not allowed to participate in the competition.

Bible Quiz Coordinator of IPTF 2025 will be setting the questions.

Quiz Master will use the following Bibles for reference.

- English: New American Bible Revised Edition (NABRE)
- Malayalam: Pastoral Orientation Center (Thiruvachanam)

Quiz master's decisions will be final.



Categories	Quiz Topics
Category II	Gospel according to Mark
Category III	Gospel according to Mark and Letter to Galatians
Category IV	Gospel according to Mark, Letter to Galatians and Book of Hosea
Category V	Gospel according to Mark, Letter to Galatians, Book of Hosea and Book of Daniel

GENERAL GUIDELINES – TALENT FEST 2025

BIBLE READING (Malayalam & English)

- ❖ For English Bible reading one participant from Category V (Age 25-35) per parish/ mission.
- ❖ For Malayalam Bible reading one participant from Category V (Age 35 and above) per parish/ mission.
- ❖ Only the performing participant is allowed in the hall; all other participants will remain in a separate room away from the hall. Event coordinator will collect all electronic gadgets and Bible from the participants.
- ❖ Each participant will be given a passage 1 minute before entering the hall.
- ❖ Passage will be provided in the respective language.
- ❖ When the start bell rings participants must locate the passage and start reading.
- ❖ A maximum of 3 minutes is allowed to complete the reading.
- ❖ No microphones will be provided.
- ❖ A podium will be provided for the participants to stand at while reading.
- ❖ No minus mark for holding the Bible in the hand or keeping the Bible in the podium.
- ❖ Participants may continue reading even after the 3-minute bell rings.
- ❖ Time limit policy applies. Please refer time limit policy on page 27.
- ❖ The audience is expected to remain silent during the event.
- ❖ Participants may leave the hall once their performance is complete, or they can choose to sit with the audience.
- ❖ Participants must read only from the Bible provided on the podium.
 - English: New American Bible Revised Edition (NABRE) – from New Testament only
 - Malayalam: Pastoral Orientation Center (Thiruvachanam)
- ❖ No bookmarks will be provided in the Bible on the podium.
- ❖ Judges will evaluate the participants' ease in locating the passage in the Bible.



Judging Criteria	Description	Total Points
Knowledge	Opening and handling of the Bible with respect and ease of finding the passage.	30
Start & End	Start with “Brothers and sisters, a reading from” End with a meaningful silence and closing the Bible respectfully.	10
Delivery	Clarity, Projection, Appropriate voice modulation, Meaningful emphasis, Poise, Pace, Pronunciation, Tone and flavor of reading.	40
Confidence	Confidence, Personal style, Eye contact with the audience.	20

GENERAL GUIDELINES – TALENT FEST 2025

SOLO DANCE FOLK (Christian)

- ❖ Dance must include elements of traditional folk style
- ❖ Costume should be appropriate for a folk dance. Costume should also be appropriate for a Church environment.
- ❖ Theme of the item should be Christian based.
- ❖ Any Christian Malayalam song can be used.
- ❖ A maximum of 7 minutes will be allowed.
- ❖ No extra marks for any properties used on stage.



Judging Criteria	Description	Total Points
Dance Movement	How the contestant begins the dance and the conclusion. Do the movements of the foot and hand reflect traditional folk?	20
Abhinaya/ drama	Includes dramatic, choreography, creativity, music and facial expressions.	20
Costume and Precision	Is the contestant doing the correct step to the correct music? Does the costume represent the dance theme?	20
Energy and Stage Coverage	Is the person performing the dance with energy and spirit? Is the contestant covering the entire stage?	20
Overall Impact	Is the dancer engaging the audience with their performance? Is the performer enjoying what she or he is doing?	20

SOLO DANCE SEMI CLASSICAL (Christian)

- ❖ Semi classical dance breaks the stylized structures and forms of the classical dance and adopts a more contemporary feel and steps. All along the ethos of the basic dance remains intact. The movements must adhere to any of the classical styles of Indian dance. The piece can be a fusion of many Indian classical styles.
- ❖ Costumes should be appropriate for the dance music theme/ semi-classical style (classical style or adaptation from an Indian classical style costume). Costume should also be appropriate for a church environment.
- ❖ Any Christian semi-classical (Malayalam) song can be used.
- ❖ Theme of the item should be Christian based.
- ❖ No extra marks for any properties used on stage.
- ❖ A maximum of 7 minutes will be allowed.



Judging Criteria	Description	Total Points
Angashudhi (Purity of the dance movements)	How the contestant begins the dance and the conclusion. Do the movements of the foot and hand gestures and speed reflect Semi-Classical Dance	20
Abhinaya/ drama	Includes dramatic, choreography, creativity, music and facial expressions.	20
Costume and Precision	Is the contestant doing the correct step to the correct music? Does the costume represent the dance theme and add to the performance?	20
Energy and Stage Coverage	Is the person performing the dance with energy and spirit? Is the contestant covering the entire stage?	20
Overall Impact	Is the dancer engaging the audience with their performance? Is the performer enjoying what she or he is doing?	20

GENERAL GUIDELINES – TALENT FEST 2025

GROUP DANCE (Christian)

- ❖ Dance Style can include any style like folk and traditional Indian Classical dance styles like Bharathanatyam, Mohiniyattam, Kuchipudi, Kathak, Odissi, etc.
- ❖ Costume should be appropriate for a folk, Semi-Classical/Classical dance. Costume should also be appropriate for a Church environment.
- ❖ Only two teams per parish/mission. Each team can have 3 to 9 contestants per Parish/Mission
 - One Team combining Category III and Category IV (Grade 6 to Grade 12)
 - One Team for Category II (Grade 3 to Grade 5)
 - A parish cannot have more than one team from the same category
- ❖ Theme of the item should be Christian based.
- ❖ Song track must be in Malayalam.
- ❖ No extra marks for any properties used on stage.
- ❖ No sets are allowed on the stage. (e.g. Caves, pillars etc.)
- ❖ A maximum of 7 minutes will be allowed.



Judging Criteria	Description	Total Points
Dance Movement	How the group begins the dance and the conclusion. Do the movements of the foot and hand have elements of traditional classical dance likes Bharathanatayam, Mohiniyattam, Kuchipudi, Odissi, etc., and Folk.	20
Abhinaya/ drama	Includes dramatic, choreography, creativity, music and facial expressions.	20
Coherence and Costume	Is the group dancing as whole? Do the patterns flow well with the whole group? Does their costume represent the dance theme?	20
Energy and Stage Coverage	Is the group performing the dance with energy and spirit? Are the contestants covering the entire stage?	20
Overall Impact	Is the group engaging the audience with their performance? Are the performers enjoying what they are doing?	20

GENERAL GUIDELINES – TALENT FEST 2025

BOYS DANCE MEDLEY

- ❖ Only one male team per parish/mission.
- ❖ One Team of only boys from Category III and IV combined.
- ❖ Each team can have 6 to 12 Participants.
- ❖ The music must be Christian and may be in English, Malayalam, Tamil, Hindi, or a combination of these languages. Music in other languages will not be permitted.
- ❖ All music selections must be pre-approved by the host parish panel to ensure they are Christian songs.
- ❖ Team to dance according to a theme, and the theme to be well conveyed to the Audience/judges through the performance.
- ❖ Maximum 7 minutes allowed.
- ❖ Can use hand props. No extra marks for any props.
- ❖ No sets are allowed on the stage. (e.g. Caves, pillars etc.)

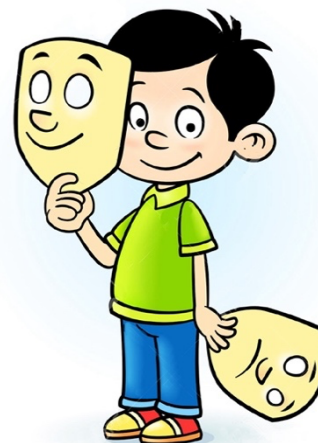


Judging Criteria	Description	Total Points
Creativity / Originality	How Creative the Theme is? How well the Theme is conveyed through the Performance? How Creative and Original the Performance is?	25
Dance/drama Synchronization	Includes Dance and dramatic elements, Choreography, creativity, music and facial expressions, how well synchronized?	25
Energy and Stage Coverage	Is the group performing the dance with energy and spirit? Are the contestants covering the entire stage?	20
Coherence and Costume	Is the group dancing as whole? Do the patterns flow well with the whole group? Does their costume represent the dance theme?	15
Overall Impression / Presentation	Is the group engaging the audience with their performance? Are the performers enjoying what they are doing?	15

GENERAL GUIDELINES – TALENT FEST 2025

MONO ACT (English, Malayalam or Both)

- ❖ Mono Act contestants should not use any misleading/controversial references.
- ❖ Theme of the item should be Christian based.
- ❖ A maximum of 5 minutes will be provided.
- ❖ Costumes and properties are not allowed.
- ❖ Time limit policy applies. Please refer time limit policy on page 27.



Judging Criteria	Description	Total Points
Acting	Ability of the performer to portray the following should be judged: Emotions/ mannerisms/ accents/ attitude	25
Dialogue Delivery	How creative are the spoken lines? Are the words clearly enunciated? Is there sufficient fluctuation in tone as required? Do the spoken dialogues reinforce the character's emotions? Personality etc.?	25
Imagination and content	How imaginative is the setting of the incident? How relevant is the setting to the topic stated? How relevant is the setting in today's world- for a Christian? Is there a sense of drama/urgency/conflict being portrayed? Complexity of the situation. Use of elements such as comedy, tragedy, drama, suspense etc.	25
Characterization	How well does the performer develop their characters on-stage? Do they come to life? The use of narrative, actions or dialogue to bring out the characters' personality. How many characters are successfully portrayed? Do the characters have a sufficient level of complexity? Are the characters credible? Do real people behave this way?	25

GENERAL GUIDELINES – TALENT FEST 2025

BIBLE SKIT

- ❖ There is no restriction on actors taking on multiple roles.
- ❖ The skit duration is 20 minutes, with an additional 10 minutes for preparation.
- ❖ Guns, weapons, chemicals, or similar items are strictly prohibited on stage.
- ❖ Additional lighting and smoke machines are allowed with prior approval.
- ❖ Best Actor and Best Actress awards will be given based on performance.
- ❖ The skit's theme must be Christian based.
- ❖ Only one team (comprising 5 to 15 participants) per Parish/Mission, from categories II to V, is allowed to participate.
- ❖ Participants in Category V must be 22 years old or younger as of June 1, 2025 (the registration deadline).
- ❖ No microphones are allowed. Dialogues, effects, and music must be pre-recorded and submitted to the General Coordinator by July 20th, 2025.
- ❖ **All dialogues must be recorded by the participants themselves**, with certification from the Vicar of their Parish/Mission confirming this.
- ❖ Dialogues can be in English, Malayalam, or a mix of both languages.
- ❖ Performances must remain confined to the stage, with no interaction outside the performance area.
- ❖ Backdrops can be displayed on a LED wall, but only still images are allowed—no videos, no animations.
- ❖ There should be no damage to the LED wall during the placement or removal of the set. Teams will be responsible for all cost related to the damages.
- ❖ Set, props and backdrops will not be considered in judging criteria.
- ❖ Each team should assign a representative to assist with the management of the following areas: Curtains, Audio, LED wall, and Lighting.
- ❖ Time limit policy applies. Please refer time limit policy on page 27.



Judging Criteria	Description	Total Points
Story	Creativity, Originality, Relevance to the topic/title. Presence of an overarching theme Is there a good development and a credible climax? Continuity and connection between all elements? Sense of urgency/suspense/drama – “what happens next?”	25
Acting	Ability of the performers to portray the following should be judged: Emotions/ mannerisms/ accents/ attitude/ props (hand or set props) Working well with others on-stage – playing off each other Being in the right place for the next delivery or action	25
Dialogue Delivery/Lip sync	How creative are the spoken lines? Are the words clearly enunciated? Is there sufficient fluctuation in tone as required? Do the spoken dialogues reinforce the character’s emotions, personality, etc.? Is there a good inter-play between dialogues? Do the characters lip sync dialogues properly? The words should not seem recited by-heart.	25
Costume	How relevant is the costume to the character? To the story? How creative are the costumes and make-up? How extensive are the two elements? Did they go to great length? Do the costumes help in the narration of the story? How credible/ relevant is the make-up to the character/story?	25

GENERAL GUIDELINES – TALENT FEST 2025

SOLO SONG ENGLISH

- ❖ Any Christian English song may be sung for the competition. Secular music will not be allowed.
- ❖ Contestants must have the song memorized.
- ❖ Contestants are allowed to accompany Karaoke/Track music.
- ❖ Intermittent humming or chorus in the Karaoke/Track is permitted for Solo Song.
- ❖ No live instruments can be played during this competition.
- ❖ A maximum of 6 minutes will be provided.



Judging Criteria	Description	Total Points
Musicianship	Phrasing, Contrast mood, Contrast dynamics	25
Selection	Words/music complementary Difficulty Appropriate for the voice Appropriate for the occasion	25
Technique	Breath, Diction, Tone, Vitality	25
Accuracy	Text, Rhythm, Pitch, Style	25

GENERAL GUIDELINES – TALENT FEST 2025

SOLO SONG MALAYALAM

- ❖ Any Christian Malayalam song may be sung for the competition. Secular music will not be allowed.
- ❖ Contestants must have the song memorized.
- ❖ Contestants are allowed to accompany Karaoke/Track music. Intermittent humming or chorus in the Karaoke/Track is permitted for Solo song.
- ❖ No live instruments can be played during this competition.
- ❖ A maximum of 6 minutes will be provided



Judging Criteria	Description	Total Points
Musicianship	Phrasing, Contrast mood, Contrast dynamics	25
Selection	Words/music complementary Difficulty Appropriate for the voice Appropriate for the occasion	25
Technique	Breath, Diction, Tone, Vitality	25
Accuracy	Text, Rhythm, Pitch, Style	25

GENERAL GUIDELINES – TALENT FEST 2025

GROUP SONG

- ❖ Any Christian song in English may be performed for the competition. Songs in other languages and secular songs are not permitted.
- ❖ Contestants must have the song memorized.
- ❖ Contestants are allowed to use Karaoke/Track music. Intermittent humming or chorus in a song will be allowed.
- ❖ No live instruments can be played during this competition.
- ❖ Only one team (contestants 5 to 10) per Parish/Mission with contestants from Categories II to IV can participate in the competition.
- ❖ A maximum of 6 minutes will be provided.



Judging Criteria	Description	Total Points
Ensemble	Togetherness, Balance, Blend and Diction	20
Interpretation	Performance and Styling	20
Musicianship	Phrasing, Tempo, Rhythm, Harmony & Range of dynamics	30
Selection	Appropriateness and Difficulty	20
Stage Presence	Appearance, Poise	10

GENERAL GUIDELINES – TALENT FEST 2025

INSTRUMENTAL MUSIC (Group)

- ❖ Any Christian Western or Indian music may be performed for the competition. Secular music will not be allowed.
- ❖ Use of music sheet will be allowed. There will be no deduction of points for use of music sheet.
- ❖ All electronic instruments (such as keyboard, rhythm box, etc.) with built-in or separate MIDI Sequencer will be permitted to be played in the live performance (manual) mode only. Contestants that use Pre-recorded, Karaoke or Sequenced music will be disqualified
- ❖ Maximum setup time is 10 minutes.
- ❖ Performance timing will be maximum of 7 minutes.
- ❖ Only one team (contestants 5 to 10) per Parish/Mission with contestants from Categories II to IV can participate in the competition.
- ❖ Time limit policy applies. Please refer time limit policy on page 27.



Judging Criteria	Description	Total Points
Tone	Quality, Control and Intonation	15
Articulation	Attacks and Releases, Slurring, Note Accuracy and Rhythmic Accuracy	15
Ensemble	Blend, Balance, Precision	15
Musicianship	Mood and Emotion, Artistry	15
Interpretation	Tempo, Phrasing, Dynamics, Fluency, Style	15
Presentation	Appearance, Poise, Stage presence	15
Selection	Appropriateness, Difficulty	10

GENERAL GUIDELINES – TALENT FEST 2025

MARGAM KALI (മാർഗം കളി)

- ❖ Only one team per parish/mission.
- ❖ Each team can have up to 12 participants from Category V. If there are not sufficient adult participants in any parish or mission, high school students can also participate in the Margam Kali competition. At least 50% of the participants must be over the age of 35.
- ❖ The team may consist of all male members or all females.
- ❖ Song should be recorded only.
- ❖ Sing-alongs or lip-syncing by individuals other than the dancers are not allowed.
- ❖ A maximum of 10 minutes will be allowed.
- ❖ The costume should be traditional and appropriate for Margam Kali, as well as suitable for the church environment.
- ❖ The song must also be traditional; secular Margam Kali songs are not allowed.
- ❖ Nilavilakku will be provided by the host parish.



Judging Criteria	Description	Total Points
Rhythm	How the hand and foot movements coordinate with the song?	20
Formation	How the group begins and the concluding the performance. Is the group performing with energy and spirit? Are the contestants covering the entire stage?	20
Expression	Appearance, Poise & Stage presence	20
Costumes	How traditional are the costumes and make-up?	20
Overall Impact	Is the group engaging the audience with their performance? Are the performers enjoying what they are doing? How relevant is the song?	20

GENERAL GUIDELINES – TALENT FEST 2025

BIBLE TABLEAU

- ❖ Each team can have a 3 to 10 Participants from Category V (Age group of 18-25)
- ❖ Duration: 1 minute on stage after curtain raising.
- ❖ Maximum stage set-up time is 5 minutes. Maximum stage clearance time 2 minutes.
- ❖ Maximum of two persons are allowed, other than the participants, to assist the team in setting up or clearing the stage.
- ❖ No audio or narration allowed.
- ❖ Simple properties are allowed. (e.g. chair, table, cross etc.)
- ❖ Humidifiers, smoke machines, or smoke emitters, guns, weapons, chemicals, or similar dangerous or heavy items are strictly prohibited on stage.
- ❖ Backdrops can be displayed on a LED wall if needed, but only one still image is allowed—no music, no dialogues, no videos, no animations.
- ❖ Negative marks may be awarded for even the slightest movement on stage.
- ❖ The tableau theme should be based on a Biblical event.



THEME for IPTF 2025: The Good Samaritan story in a modern world context.

Judging Criteria	Description	Total Points
Theme Representation	How well does the tableau depict the chosen theme? Is the message of the story clear and meaningful? Does it creatively relate to the modern context?	20
Composition and Arrangement	Are the characters arranged harmoniously? Does the tableau have a balanced and visually pleasing composition? Is there a focal point that immediately grabs attention?	20
Visual Appeal	Does the tableau create a striking and memorable visual impact? Are the colors and overall presentation visually cohesive? Is the scene clean and well-organized?	20
Stillness and Discipline	Are the participants maintaining their poses without movement? Is there visible focus and discipline among the participants?	20
Overall Impact	Does the tableau leave a lasting impression? Is the story easily understandable to the audience and judges? Does it evoke the intended emotions, such as awe, inspiration, or reflection?	20

GENERAL GUIDELINES – TALENT FEST 2025

IMPORTANT DEADLINES AND DATES

Activity	Date
Initial Broadcast of Guidelines to All Parishes/Missions	November 30, 2024
Publish Finalized Guidelines	December 15, 2024
Parish/Mission Level Competitions¹	December 2024 – May 2025
IPTF 2025 Registration Starts	January 5, 2025 (Sunday)
Literary Events Competitions	March 8, 2025 (Saturday): 3 pm – 6:30 pm Watercolor painting and Essay Writing March 9, 2025 (Sunday): 3 pm – 6 pm Pencil sketching and Poetry Writing
Parish/Mission Level Literary Competitions Photos with Artists/Writers²	March 30, 2025 (Sunday)
Literary Events Parish Level Winning Entries to be Received at Host Parish³	April 4, 2025 (Friday)
IPTF 2025 Registration Ends	June 1, 2025 (Sunday)
Tracks for All Events except bible skit to be Received by Host Parish	June 15, 2025 (Sunday)
Initial Draft Schedule Released for Review⁵	July 5, 2025 (Saturday)
Deadline to Receive Tracks for Bible skit	July 20, 2025 (Sunday)
Talent Fest 2025⁴	August 1 to August 3, 2025 (Friday, Saturday and Sunday)
Select and Announce IPTF 2027 Host Parish/Mission	August 3, 2025 (Sunday)

1. Rough guideline for Talent Scan. Individual Parishes to execute their Talent Scan.
2. Photos that accurately capture the parish level winners with their artwork or writings (drawings, paintings, essays, and poetry) must be sent to the hosting parish coordinators by March 30, 2025.
3. Any seals or signatures of approval for any of the parish/mission level literary competition items must be on the back and not visible when viewing from the front.
4. Events will be starting on Friday August 1st, 2025, morning.
5. Exact Schedule could be decided only after completion of registrations. The order of performance for participants in each event will be determined by random draw of lots. The date and details of the draw will be announced after the registration period ends.

TIME LIMIT POLICY

- ❖ To be fair to all contestants, time limits for each event will be strictly enforced.
- ❖ Contestants will not be disqualified if they exceed the maximum allotted time.
- ❖ Time clock will start when the first sound (whether instrument or voice) is heard by the audience.
- ❖ Time clock will stop when the last sound (whether instrument or voice) is heard by the audience.
- ❖ For all stage events (except Bible skit and Bible Tableau), a fifteen (15) second 'grace' period will be allowed after the allotted time - with a minor penalty of up to a maximum half (0.5) points per judge.
- ❖ For Bible Skit, a two (2) minute 'grace' period will be allowed after the allotted time - with a minor penalty of up to a maximum one (1.0) point per judge.
- ❖ For ALL events, after the 'grace' period, the penalty will be one (1) point per extra 10 seconds.
- ❖ A warning bell/flag/light will be provided 30 seconds prior to end of allotted time - as a courtesy, NOT as a guarantee, to the contestants.
- ❖ For Essay Writing, Poetry writing, Pencil sketching & Painting (Watercolors) events, 3 warnings will be provided – 15 minutes, 10 minutes and 5 minutes prior to the end of the allotted time
- ❖ Judges will be asked to consider only the performance by the contestant and assign the scores per each criterion; the time penalty will be calculated separately by a timekeeper and levied from each judges' score sheet at the time of tabulation.

LITERARY COMPETITIONS LOGISTICS

Logistics for the execution and evaluation of Essay Writing, Poetry Writing, Watercolor Painting and Pencil Drawing.

- ❖ Watercolor painting will be conducted on March 8, 2025 (Saturday) on 3:00 pm CST to 4:30 pm CST. (90 minutes)
- ❖ Essay Writing will be conducted on March 8, 2025 (Saturday) on 5:00 pm CST to 6:30 pm CST. (90 minutes)
- ❖ Pencil Sketching will be conducted on March 9, 2025 (Sunday) on 3:00 pm CST to 4:30 pm CST. (90 minutes)
- ❖ Poetry Writing will be conducted on March 9, 2025 (Sunday) on 5:00 pm CST to 6:00 pm CST. (60 minutes)
- ❖ There will be a 30-minute break between the competitions each day.
- ❖ The topics for each competition will be sent only to the Parish Talent Fest coordinators 30 minutes before the start of each competition via email.
- ❖ At the end of the competition, the papers should be collected, sealed (church seal - only on the back of the papers) and secured in an envelope in the presence of Vicar.
- ❖ The evaluation for Parish Level competition will be done at Parish Level and two winning entries in each category will be sent for IPTF competition.
- ❖ Photos that accurately capture the parish level winners with their artwork or writings (drawings, paintings, essays, and poetry) must be sent to iptf2025pearland@gmail.com by March 30, 2025.
- ❖ The winning entries should be received at the following IPTF office address below on or before April 4, 2025.

Rev. Fr. Varghese George Kunnath
1521 Pastureview Dr.
Pearland, TX 77581

- ❖ There should be separate envelope for each category and each individual event.

IPTF 2025 Essay Writing, Poetry Writing, Watercolor Painting and Pencil Drawing winners will be declared a week before the event.

GRIEVANCE AND DISCIPLINARY POLICY

The mission of IPTF 2025 is to foster friendship, harmony, and cooperation among Syro-Malabar Catholic families across the Texas, Oklahoma, and Missouri regions, transcending Parish and Mission boundaries. In keeping with this Christian spirit, all participants, parents, coordinators, and parish/mission members are expected to uphold these values. While we strive for smooth execution of events, there may occasionally be genuine reasons for grievances. This policy outlines the procedures for addressing such grievances and disciplinary issues.

Grievance Procedures

1. Filing a Complaint

- Contestants dissatisfied with any arrangements or results must contact the IPTF 2025 General Coordinator through their Parish-level Talent Fest Coordinator or Vicar.
- Only grievances related to policy violations outlined in the IPTF 2025 guidelines and applicable clarifications will be accepted.
- Judges' scoring decisions are final and are not subject to discussion or appeal once results are officially announced. Complaints related to judging decisions will not be entertained.

2. Grievance Resolution Committee

The Grievance Resolution Committee will include:

- The Vicar of the host Parish, Two independent designated members from the host Parish, The IPTF 2025 General Coordinator, Parish-level Talent Fest Coordinators and Vicars of all participating Parishes/Missions.

3. Submission Process

- Complaints must be submitted in writing at the IPTF 2025 office within **30 minutes** of the event results being announced.
- Grievance forms will be available at the IPTF 2025 office.
- After reviewing the complaint, the committee will notify the complainant if the complaint does not warrant further consideration.

4. Committee Decisions

- A competition result may be overturned if the grievance committee finds a valid policy violation.
- If a complaint merits consideration, the committee will invite both the complainant and the aggrieved party (or their Vicar, in the case of group complaints) to participate in deliberations.
- If a unanimous decision cannot be reached, a final decision will be made based on a majority vote, with each Parish/Mission having one vote.
- In the event of a tie, the Vicar of the host Parish or the IPTF 2025 General Coordinator will cast the tie-breaking vote.
- All decisions made by the committee are final and binding.

GENERAL GUIDELINES – TALENT FEST 2025

Disciplinary Measures

1. Prohibited Behaviors

- The use of foul language, personal attacks, racial slurs, or physical altercations is strictly prohibited.
- Contestants found guilty of such behavior may face disqualification and forfeiture of any prizes won. Additionally, their Parish/Mission may lose points or be disqualified from the competition, as determined by the committee.

2. Complaints Against Other Contestants or Groups

- If a complaint is lodged against another contestant, group, Parish/ Mission, the committee will carefully evaluate its validity.
- Both parties involved in the complaint will be required to attend deliberations.

Restrictions on External Involvement

- The IPTF 2025 office will not entertain complaints or grievances from parents, family members, friends, or parishioners.
- Only Parish-level Talent Fest Coordinators or Vicars may discuss grievances and disciplinary matters with the IPTF 2025 office.

Code of Conduct

All participants, coordinators, and parish members are reminded to uphold the spirit of friendship, harmony, and cooperation throughout the event.

This is our festival, and fostering unity should remain our highest priority.

